

# QwikSeal™

by Fernco, Inc. 

## UNIVERSAL DRAIN PIPE CONNECTOR



**CORRUGATED**



**SDR-35**



**CONCRETE**



**CLAY**

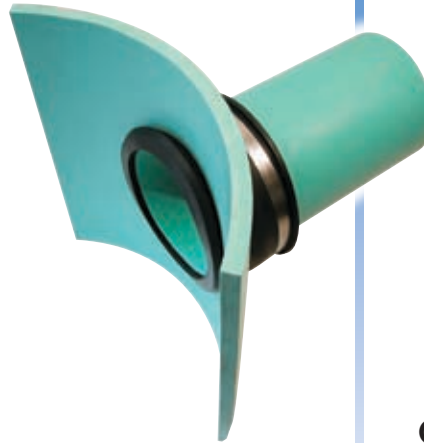
If you can **core through it**,  
QwikSeal can **connect to it**.



## If you can core through it, QwikSeal can connect to it.

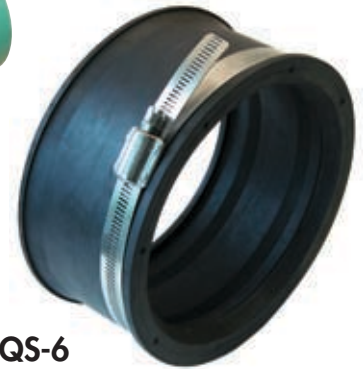
QwikSeal allows you to connect service pipes to **ALL KNOWN** solid wall, profile, closed profile and corrugated pipe manufactured today.

- Available in 4" and 6" sizes
- Use a standard 5" or 7" hole cutter
- One size fits ALL clay, PVC, concrete and corrugated pipe materials
- No more searching for the right gasket
- Fast - Simple - Reliable
- Tap into new, existing and rehabilitated sanitary and storm sewer
- Heavy duty 316 series stainless steel clamp



**QS-4**

Connects 4" SDR-35 plain end pipe stub to 8" and larger drain pipe.



**QS-6**

Connects 6" SDR-35 plain end pipe stub to 10" and larger drain pipe.



Core a perpendicular hole to the main line:  
- 5" hole for 4" SDR-35  
- 7" hole for 6" SDR-35



Clean and remove any burrs from opening.



Remove clamp from QwikSeal, fold and insert into opening. Unfold.



Pull up on QwikSeal until it stops against the inside of the pipe.



Cut a 12" to 15" length of SDR-35 pipe. Bevel the leading edge of the pipe.



Mark the insertion depth on length of SDR-35 pipe.



Lubricate the SDR-35 pipe.



Start the SDR-35 pipe into the QwikSeal by hand.



Using a hammer and block of wood, drive the SDR-35 to the QwikSeal pipe stop.



Install the band clamp at 60" lbs. torque.

Connect to lateral pipe using the appropriate Fernco Coupling or SDR-35 bell. Checks for leaks prior to backfilling.



U.S. 1-800-521-1283 • Canada 1-800-265-7518 • [www.fernco.com](http://www.fernco.com)